



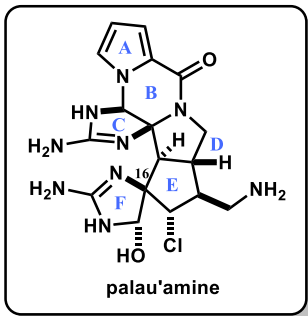
Originally isolated from a sponge, *Stylotella agminate*, in 1993 as a novel class of pyrrole-imidazole alkaloids

Isolation, Structure determination : Scheuer, P. J. *et al. J. Am. Chem. Soc.* **1993**, *115*, 3376-3377.
Structure revision : Kock, M. (2007), Quinn, R. J. (2007), Matsunaga, S. (2007)

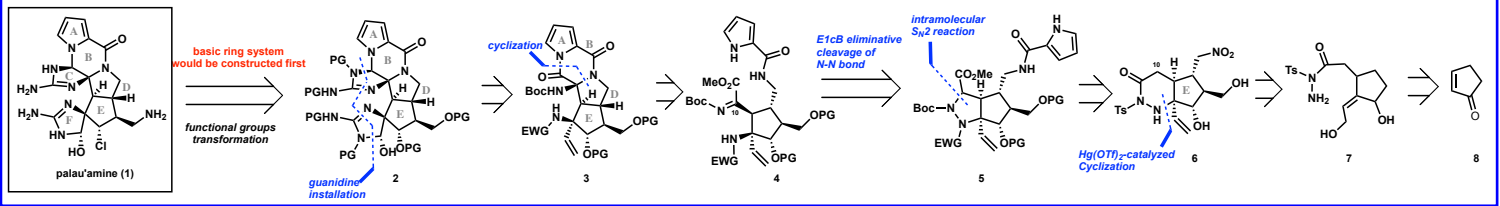
Bioactivity : immunosuppressive activity

Structural feature : 1. A trans-bicyclo[3.3.0]octane skeleton
 2. Fully substituted complex cyclopentane ring
 3. Eight contiguous stereocenters including a nitrogen-substituted quaternary carbon center

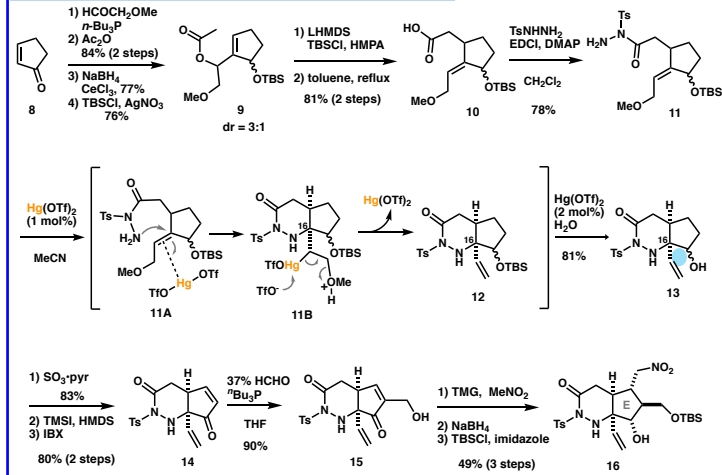
Total synthesis : Baran, Phil S. *et al. Angew. Chem. Int. Ed.* **2010**, *49*, 1095-1098.
 Baran, Phil S. *et al. J. Am. Chem. Soc.* **2011**, *133*, 14710-14726.
 Namba, K. *et al. Nature Communications*, **2015**, *6*, 8731.



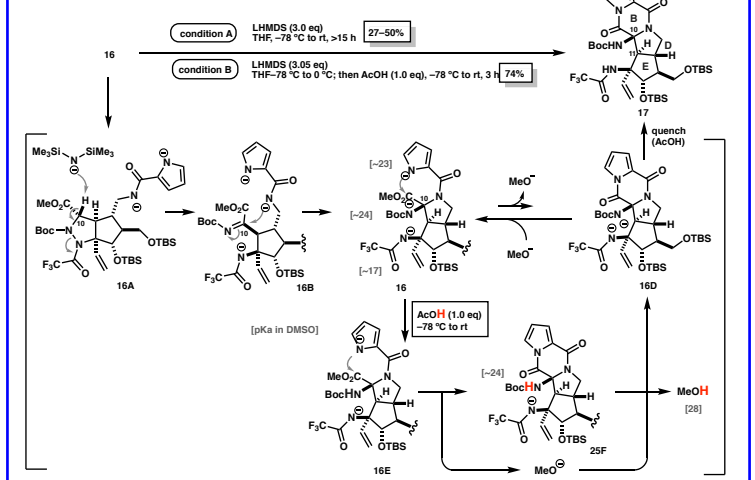
Synthetic Plan of Palau'amine



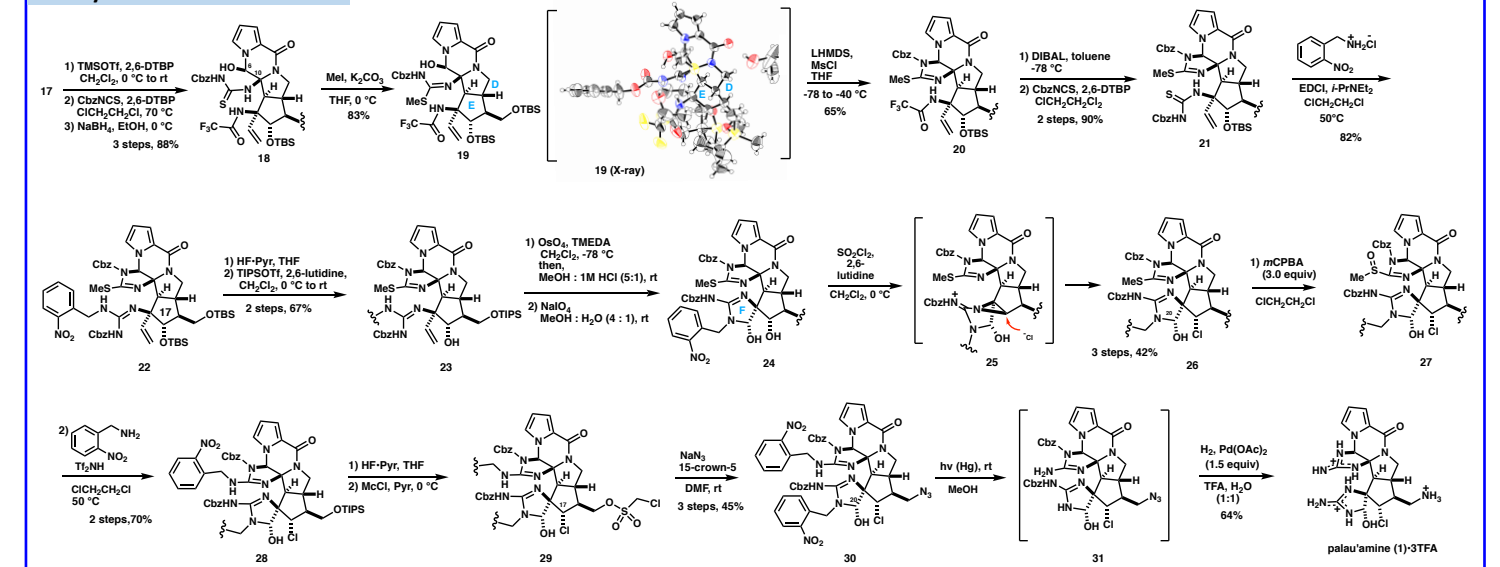
Synthesis of Cyclization Reaction Precursor



Construction of ABDE Tetracyclic Ring Core



Total Synthesis of Palau'amine



Efficient Synthesis of Palau'amine Analog

